



Maintaining Business Continuity During Covid-19

Truth about Telecommuting



Nathan Whittacre
CEO, Stimulus Technologies
www.StimulusTech.com

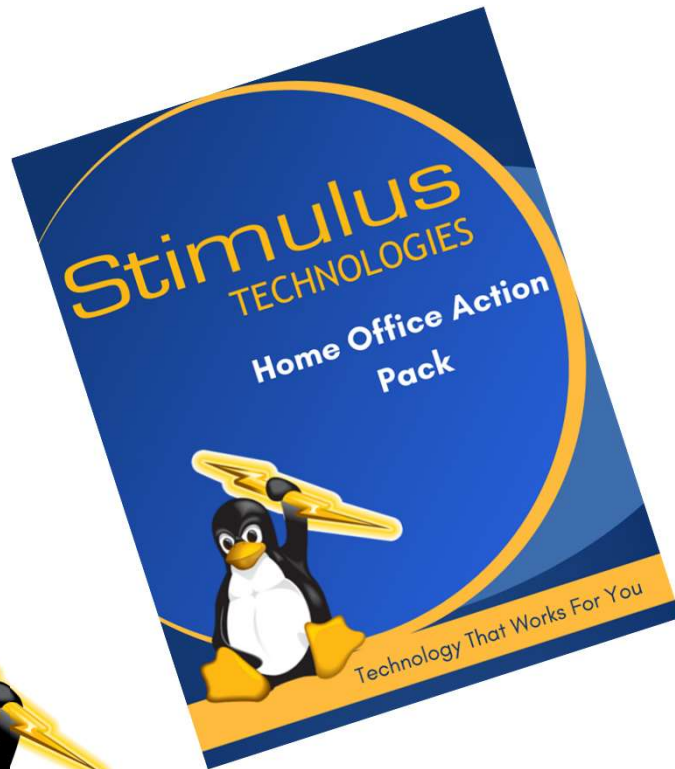
Today We're Going To Cover:

- What is Telecommuting
- What you **MUST** have in place before you start a work from home program (or continue it)
- How to save money by implementing a work from home program
- Keeping employees engaged and increase productivity
- 8 **CRITICAL** characteristics you must demand from your IT professional
- How to Get Your Free Offer



Free Bonus!

WORK FROM HOME ACTION PACK



FREE Checklist that you can use
for work from home planning –
What you need to implement now



Free Bonus!

30 MINUTE CONSULTATION



FREE 30 minute consultation with me to discuss how to best move your workforce to remote access



Who Is Nathan Whittacre?

“I am a veteran technology professional, with over 24 years of experience, master’s degree in Computer Science and expert in helping companies effectively utilize technology to help their businesses grow.”

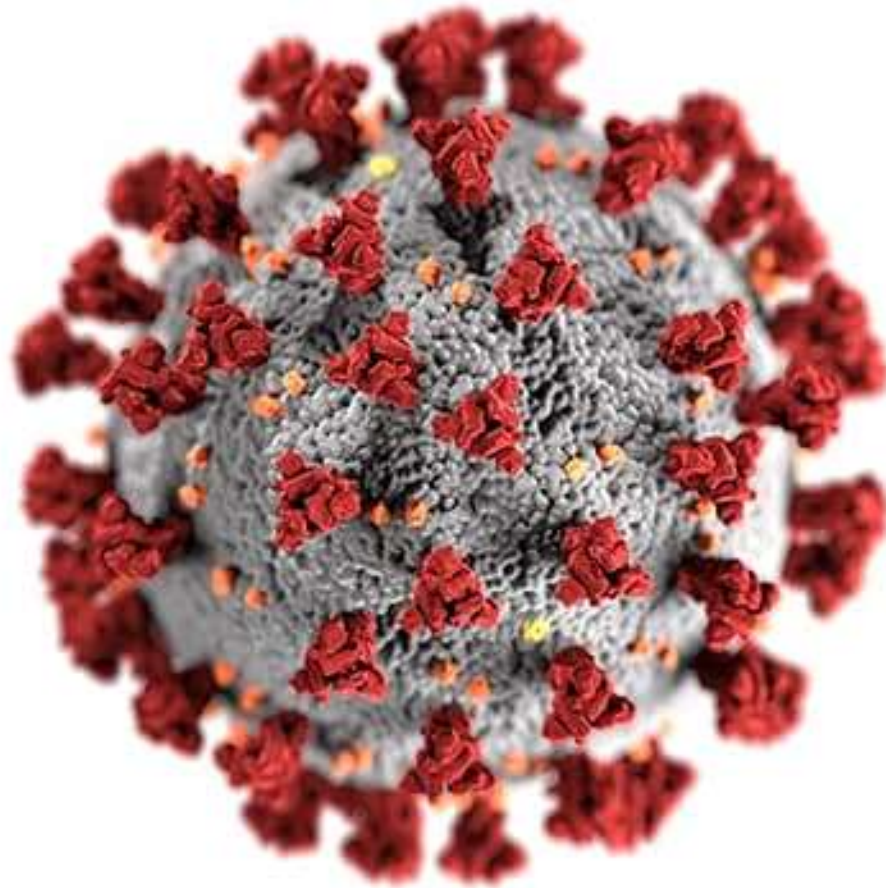
- Started Stimulus Technologies in 1995 to help businesses achieve success through technology
- Successfully worked with over 500 companies from Florida to Hawaii
- Built high-security software systems for the casino industry
- Deployed high-speed Internet service used by the Air Force, the 5th largest school district in the country, and hundreds of businesses in Nevada



What is telecommuting



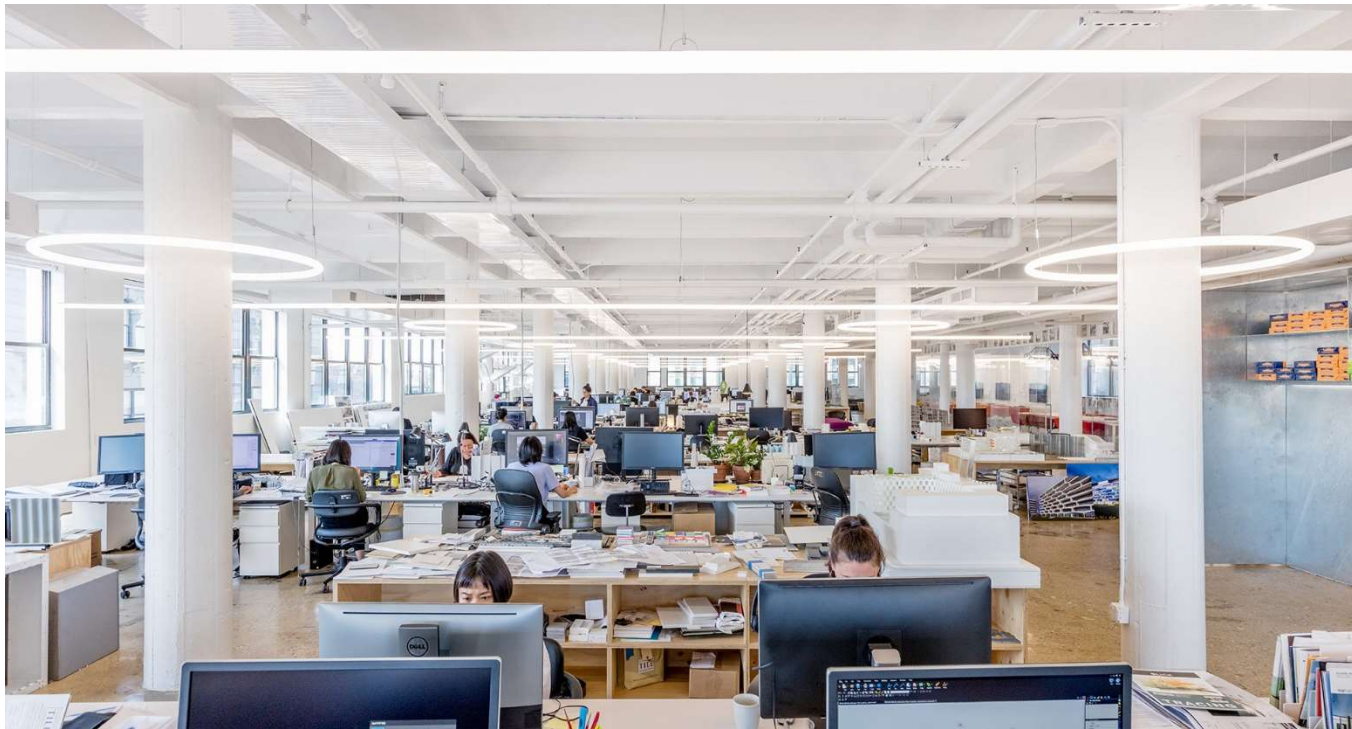
Why would a business want to do this?



Why would a business want to do this?



Why would a business want to do this?



Stimulus
TECHNOLOGIES

www.StimulusTech.com
702.564.3166



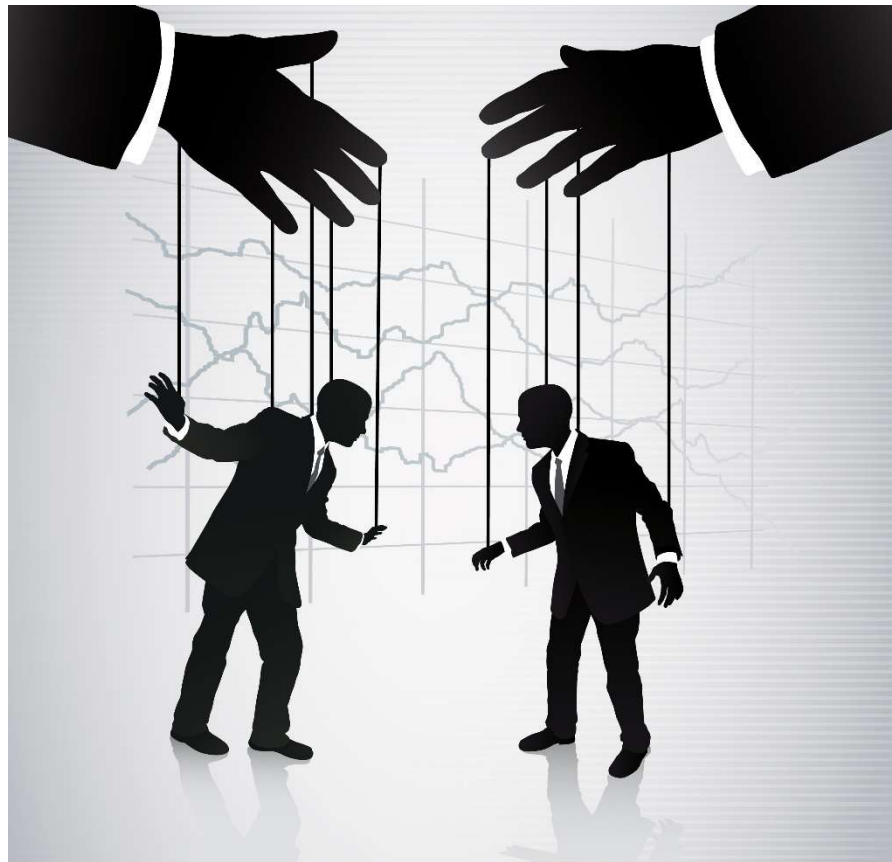
Why would a business want to do this?



Why would a business want to do this?



Why don't businesses do this?



What do other companies say?

- Los Angeles Bank – wanted to reduce their 33% turnover rate
 - **The experiment worked and within a year the turnover rate was cut to nearly zero and to everyone's surprise productivity went up 18% saving the regional bank more than \$3 million dollars per year.**
- AT&T – allowed an office in New Jersey to telecommute on a regular basis
 - **Over a 5-year period a region of AT&T saved more than \$11 million annually. Half the savings came from real estate savings while the other came from a measured increase in incremental work hours from employees who were able to have a higher level of concentration with fewer interruptions.**





But I'm not a company of 600 people

On average, small businesses report saving \$85,000 to \$93,000 per year in lower turnover, reduced operating costs (gas, utilities, office space) and increased productivity after implementing teleworking programs.

(Source: International Teleworking Advocacy Group)



What is the SINGLE MOST IMPORTANT thing you need to get started?

- Experience IT Professional to guide you through the change
 - YOUR specific needs
 - YOUR business flow
 - YOUR line of business
 - The RIGHT technology



8 CRITICAL Characteristics

- #1 -
 - EXPERIENCE in setting up remote access
 - Look at client references



Stimulus
TECHNOLOGIES

The Stimulus Team Is Very Knowledgeable And Easy To Work With

The greatest benefit to Business Finance Corporation since choosing Stimulus Technologies is the team of service technicians that are available to resolve IT problems that come up. **They are more responsive and professional than other IT firms we've worked with in the past.**

The Stimulus team is very knowledgeable and easy to work with. Their staff is pleasant, professional, and knows what they're doing.



David J. Cabral
President
Business Finance Corporation
Las Vegas, NV

Responsive, Easy to Work With & A Reasonable Price

We have worked with Stimulus Technologies since 2011. **The biggest value we have received in working with Stimulus is peace of mind.** I know that my systems will always work when I need them.

Stimulus is always ahead of the game as it pertains to maintenance of our hardware and software. Their reporting systems and accountability measures provide a higher level of assurance than other IT firms I have worked with in the past.

If someone was on the fence about choosing Stimulus as an IT solution, I would tell them that in my experience working with other IT providers, **Stimulus provides the most value for your money.** You can rest easy knowing they have your back.



David M. Grant Esq.
Partner
Grant Morris Dodds PLLC
Gmdlegal.com
Henderson, NV

A Wealth Of Knowledge And Incredible Customer Service

The biggest benefit to working with Stimulus is that they are a wealth of knowledge on all kinds of issues. The entire staff is so friendly and helpful and they provide incredible customer service with very quick response.

Stimulus is always honest and upfront about our IT needs. Other IT firms we worked with in the past would try to sell us on a service that we didn't need and on top of it, they didn't provide good customer support.

I would tell everyone to go with Stimulus because they won't be disappointed with the service.



Melissa Meyer
Bookkeeper
Ralph Jones Display
Las Vegas, NV

8 CRITICAL Characteristics

- #2 - They should do a THOROUGH evaluation
 - Analyze goals
 - How many employees
 - How often
 - Line of business applications
 - Level of security



8 CRITICAL Characteristics

- #3 - Training
 - Big change for your staff
 - Ability to train and assist with the changes



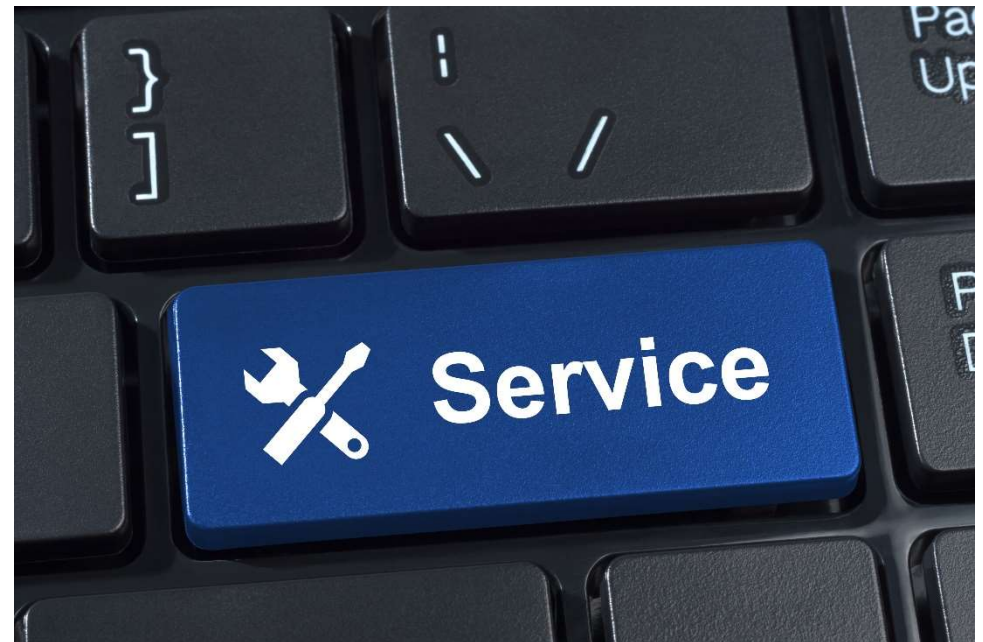
8 CRITICAL Characteristics

- #4 – After Hours Support



8 CRITICAL Characteristics

- #5 – Network Maintenance
 - Security a HUGE concern
 - Regular checkups and alerting



8 CRITICAL Characteristics

- #6 - Phones
 - Don't rely on Cell Phones
 - Need to still look like they are calling from the office



8 CRITICAL Characteristics

- #7 – Vendor Management
 - Line of business applications
 - Internet providers



8 CRITICAL Characteristics

- #8 – Employee Monitoring and Content Filtering
 - Securing company assets and Intellectual Property



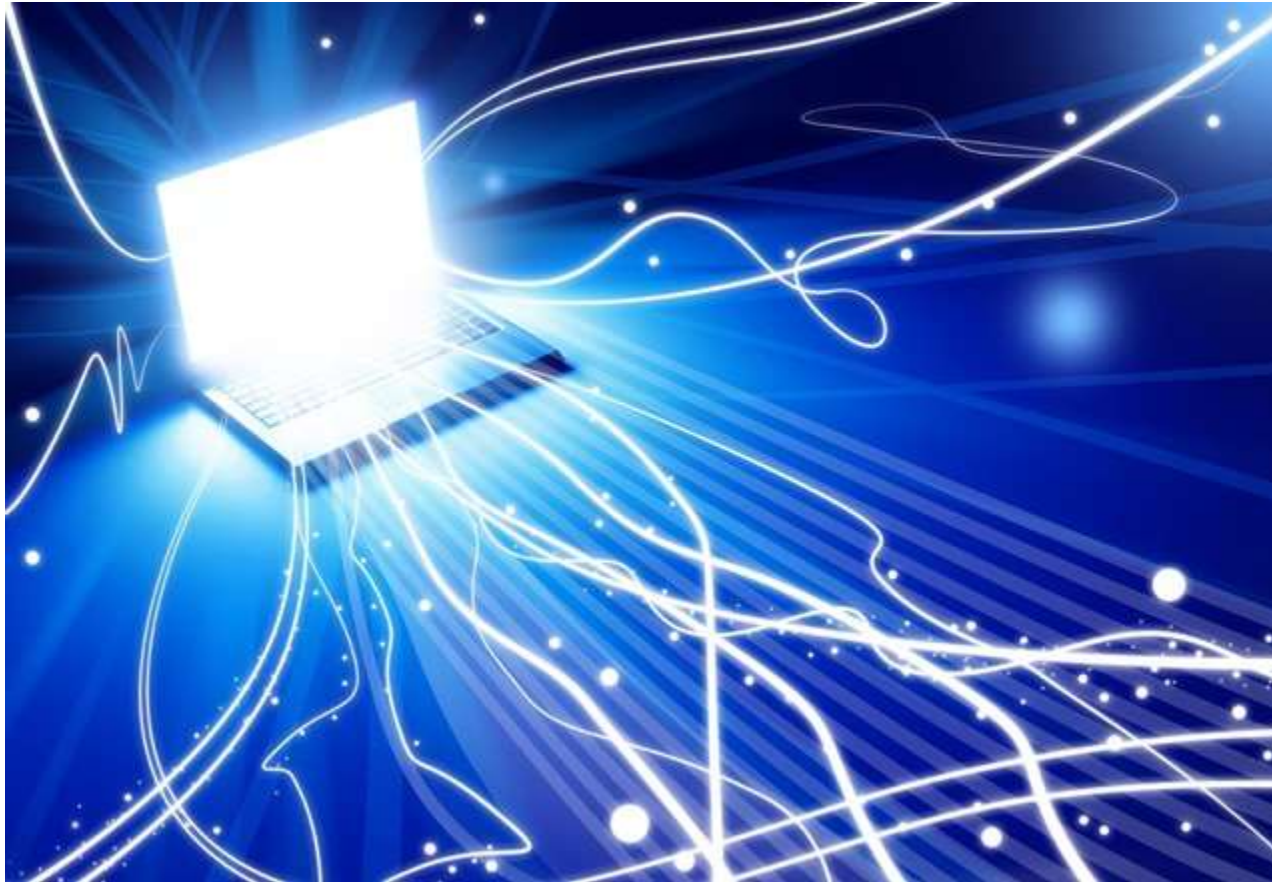
Home Office / Remote Office Considerations



Home Office / Remote Office Considerations



Home Office / Remote Office Considerations



Using BYOD

- Bring your own devices (employee's equipment) poses a security risk
 - Do they have viruses on them?
 - Is there more than one person using it?
 - Does it have sufficient virus/anti-spyware protection running on it?
 - Is it up to date?
- If you are allowing BYOD, use Remote Desktop or Screen Connect
 - Doesn't connect that device directly to the corporate network
 - Creates a layer of protection



Using company equipment



Security Considerations

- Upcoming Webinar
 - May 5, 2020
 - 1:00pm PDT





Go Here for Consult:
www.StimulusTech.com/consult



Stimulus
TECHNOLOGIES

www.StimulusTech.com
702.564.3166



thank you

